

IN THIS ISSUE:

Annual Parish Meeting

Dog Fouling

Simply Walk

Church News

Dinton Village Hall

Dinton Marquee Team

Fete Committee

School News

Fix My Street

Haddenham Screen

Community Plan

Community Vehicle

Councillor Vacancy

Concerts

Household Waste

& More



ANNUAL PARISH MEETING

9th April 2019 at 7pm
Dinton Village Hall

Chairman of the Council's
Annual Report to the Parish

You are welcome to join the parish councillors at the Annual Parish Meeting. The Chairman will give the annual report and Anne Dunne will give a presentation on the current work around the Community Plan. Refreshments will be served after the meeting.

DOG FOULING & PROSECUTION

We are receiving constant complaints about dog fouling on the pavements, pathways used by children going to school and also on the parish field. We are sorry to report that some of the dog owners are local residents, who have been seen allowing their dogs to foul the pavements and grassed areas in parts of the parish. The Parish Council has decided that no Dog Walking Companies should use the parish field as there is evidence to show that the dog walkers are not, and cannot, clear dog mess when they are walking 6 dogs! If you see any dog walking companies using the parish field, please obtain the number and contact details on the side of their vehicles and inform the Clerk to the Council, who will write to them. The parish council is also considering what action they can take to legally address this situation and CCTV is being considered to obtain the necessary evidence in order to prosecute irresponsible dog owners. **Dog owners are reminded that you can be fined for allowing your dog to foul public areas.**



COMMUNITY LITTER PICKS

FORD: Saturday 23rd March
DINTON, UPTON & GIBRALTAR: Saturday 30th March
Look out for posters for more information on times & meeting place

SIMPLY WALK

Stone, Haddenham & DINTON

Come, suited & booted for whatever the weather for an hour or so walk in the countryside on Wednesday mornings – throughout the year from:

Methodist Chapel, Eythrope Road – **STONE**

Wednesday March: 13TH-27th April: 10th- 24th May: 8th-22nd

Bradmoor Farm (rear) car park, Stanbridge Road –

HADDENHAM - Wednesday March: 6th April: 3rd May: 1st-29th

Seven Stars PH, New Road – **DINTON**

Wednesday March: 20th April: 17th May: 15th

We meet in the morning for 10.30

It's friendly, fun and **free** and sometimes come back a bit dirty, to enjoy a nice cup of coffee or tea!



Stone Haddenham & Dinton Simply Walk Dates 2019:

MONTH	STONE	HADDENHAM	DINTON
January	16th-30th	9th	23rd
February	13th-27th	6th	20th
March	13th-27th	6th	20th
April	10th-24th	3rd	17th
May	8th-22nd	1st-29th	15th
June	5th-19th	26th	12th
July	3rd-17th-31st	24th	10th
August	14th-28th	21st	7th
September	11th-25th	18th	4th
October	9th-23rd	16th	2nd-30th
November	6th-20th	13th	27th
December	4th-18th	11th	25th (TBC)

Further dates/details visit www.buckscc.gov.uk/simplywalk

Or contact Fiona Broadbent on 01494 475367.

INCREASE OF HOMES IN DINTON

Dinton Church is very pleased to announce that we have been able to increase the numbers of homes in Dinton.

We have built and erected sixteen especially designed and constructed dwellings and are ready and waiting for our new residents who we expect to come from Africa in the late spring. Sixteen Swift nest boxes have been designed and constructed to fit exactly into our ancient church tower by Nick Deschamps a close neighbour of the church.

We have furnished the new homes with nesting cups and even added chicken feathers to get the new residents started in providing the soft furnishings for their youngsters.

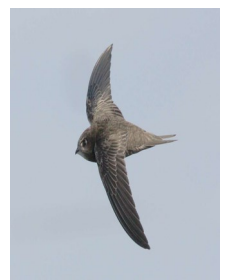
Swifts are very sociable and like to nest in colonies with family and friends.

So, in May we will play recordings of swift family calls to attract passing swifts to check out our new facilities and to hopefully, within a few years, begin a new colony here in Dinton.

This is an amazing miracle bird who spends the whole of its life flying, even sleeping on the wing and landing only when it is nesting and feeding young.

Thanks to all those who generously gave advice and financial support.

**Rosemary Jackson,
Church Warden**





DINTON CHURCH NEWS

Church Wardens:

Rosemary Jackson 01296 748655

Neil Chudley - 01296 748277

Dinton Churchyard Tidy

Spring will soon be here and once again the Churchyard Working Party will be trying to keep Dinton Churchyard tidy over the Spring, Summer and Autumn.

Can you spare a little time to help keep the churchyard tidy? The more helpers we have the easier it becomes.

The next working party will be on Saturday 13th April, from 10.15 a.m. until 12.00 noon, with refreshments provided. Then, normally on the 2nd Saturday of every month through to October. The work consists of light gardening tasks, mowing, weeding, strimming and general tidying up; tools can be provided but it would be useful if you can bring your own.

If you would like to help, but Saturday morning is inconvenient, please contact Andrew or Helen and we can let you know what areas need to be worked on, in your own time.

In particular, if anyone with a sit on mower could help us to mow the grass on the north side of the church, we would be very grateful. We leave certain parts of the Churchyard as wildlife habitats and they need a different work regime.

Please could we ask that those tending graves to put only compostable plant material in the compost bins, and to take plastic, cellophane, wire, plant pots etc. home with you.

The churchyard is maintained by volunteers and we have no way of getting rid of plastic etc.

For further information please contact Andrew or Helen Wild on 01296 748679.

Working Party dates for 2019:

April 13th / May 11th / June 8th / July 13th / August 10th / September 14th / October 12th



BUCKS COUNTY COUNCIL

Planned Road Works. If you need to know where all the works are taking place across your local areas, please contact Bucks County Council - Transport for Bucks.

Planned roadworks and diversions: You can find all planned road work closures plotted on the map (see the county council's website). To view planned roadworks, please click on 'Customise my map', then select the 'Roadworks' drop-down option and click on the box to the left of 'Roadworks'. Please note, emergency closures may not appear on the map which can be found on the Bucks County Council website. **For more information please call 01296 382416.**

DINTON PLAYGROUND PLAQUES - Children's Name Plaques

If you would like to mark the birth, or other event, of your children/grandchildren, you can purchase a plaque to be installed in the playground in the Parish Field, Dinton.

The plaques cost £15 each.

Please contact Cllr Jon Horn on **01296 748297** or jonhorn@dinton.org





HOUSEHOLD RECYCLING CENTRES

Access and site restrictions:

You can only visit a household recycling centre in a car, van, or small trailer.

Vehicles with trailers larger than 1.2m x 1.8m may only visit; Aylesbury, Amersham, Aston Clinton and High Wycombe

You may need an permit to visit a site if you are: disposing of asbestos in any vehicle, using a commercial vehicle or on foot.
using any vehicle with a trailer larger than 1.2m x 0.9m

Banned vehicles:

For safety and capacity reasons these are not allowed into any site:

- a vehicle with more than 4 wheels unless at a BCC Trade waste HRC
- a vehicle weighing more than 7.5 tonnes
- a trailer larger than 2.4m long x 1.8m wide, up to 60cm high with a cover and excluding tow bar
- a vehicle with a tipper or tipping tail lift mechanism
- horseboxes
- Tractors. Also banned are vehicles carrying commercial waste, unless paying separately to dispose of commercial waste

Access on foot: To ensure that the health and safety of anyone walking waste into the sites an e-permit is required.

Waste left outside the gates: Any waste left outside the gates is fly-tipping, anyone caught will be liable for prosecution.

Each site has CCTV for site security, health and safety of the public and operatives.

Sites also have automatic number plate recognition (ANPR) cameras to investigate fly-tipping and suspected traders depositing waste free of charge. The cameras also help monitor site usage and develop our services.

WHATS A PARISH COUNCIL?

A parish council is a civil local authority found in England and is the first tier of local government. They are elected corporate bodies, have variable tax raising powers, and are responsible for areas known as civil parishes. A parish council serving a town may be called a town council, and a parish council serving a city is styled a city council; these bodies have the same powers, duties and status as a parish council. Parish and town councils vary enormously in size, activities and circumstances, representing populations ranging from less than 100 (small rural hamlets) to up to 100,000 (Sutton Coldfield Town Council). Most of them are small: around 80% represent populations of less than 2,500. There are 9,000 parish and town councils in England. It is calculated £1 billion is invested in these communities every year. Their activities fall into three main categories: representing the local community, delivering services to meet local needs, and improving quality of life and community well being. Local councils can provide and maintain a variety of local services including allotments, bridleways, burial grounds, bus shelters, car parks, commons and open spaces, community transport schemes, community safety and crime reduction measures, events and festivals, footpaths, leisure and sports facilities, litter bins, public toilets, planning, street cleaning and lighting, tourism activities, traffic calming measures, village greens and youth projects. These existing powers were strengthened by the 2011 Localism Act, including the extension of the "General Power of Competence" to eligible local councils. A parish with a small number of electors may share a council with one or more neighbouring parishes; such an arrangement is known as a *grouped parish council*, or sometimes as a *joint parish council*, *common parish council* or *combined parish council*.

Parish councils are funded by levying a "precept" collected from within the council tax paid by the residents of the parish. Parish councils are made up of councillors who are elected to serve for four years. A casual vacancy may be filled by by-election or co-option.

Dinton with Ford & Upton Parish Council has a vacancy—Do you want to be a Parish Councillor?



Dinton Parish Fete Committee ALL COMMITTEE MEMBERS STANDING DOWN

Anyone interested in starting up a new Fete committee should contact Sylvia on 01296 748537 or David on 748655 or email d.jackson883@btinternet.com



Concerts in Dinton Church

I can't believe that I have been promoting live music in this area for nearly 17 years now. I started off in Buckingham but now operate mostly in various venues in the Oxford area. However I do occasionally put on 'home town' shows in the lovely Dinton Parish church of St Peter & St Paul. It is wonderful to be able to use this amazing 12th century Grade 1 listed building, which is such an asset to the community.



I tend to specialise in American bands who play a genre of music called Americana which I can best describe as a roots based mixture of Country, American folk and Rock 'n' Roll depending on the band. The next show we have coming up locally is with The Birds Of Chicago who will be playing on Saturday June 1st.



The main protagonists are J T Nero and multi instrumentalist Alison Russell, pictured here. If you would like to know what they, and indeed my other acts, sound like, please check out my website at www.empty-rooms.com, which has pictures, videos and details of all the upcoming shows.

HADDENHAM COMMUNITY VEHICLE

The vehicle provides transport for the surrounding villages of Stone, Hartwell, Bishopstone, Ford, Dinton, Aston Sandford, Cuddington, Chearsley and Long Crendon. The transport is FREE and is booked by contacting SUE BRIGHAM on 07495 366779 or haddenham@gmail.com

The service is for those wheelchair bound or who have difficulty walking. Transport is by wheelchair but if you have difficulty walking and are not wheelchair bound, the volunteer will bring a wheelchair to your house for your use.

If the vehicle is booked and you live in the parish, then telephone the co-ordinators of the Parish Good Neighbours Scheme for help.

See back page for contact details.





CUDDINGTON & DINTON - School News

School for Big Issue – February 2019

Our school received its SIAMS inspection (Statutory Inspection of Anglican and Methodist Schools) towards the end of last term. The inspection examined how effectively our Christian Vision translates into daily practice across the school and we are delighted to report that the result was a very positive “good” grading.

The staff started this term with a training day on Mental Health in Primary schools. It was fascinating and gave us much food for thought. We will be sharing some of their ideas with the children throughout the Spring and Summer terms.

We have had a busy time recently on the Junior site. We managed to secure some funding for the refurbishment of playground equipment. The gazebo is being moved onto the field, for shelter in the summer months. Once this has happened we will then be able to get the playground specialists in to build a new play area. Thank you very much to F4CADs for topping up the £9,000 'sugar tax' funding so that we will have a great play space for the older children next to the playground. Our caretaker is delighted as the children will no longer be walking muddy footprints into the building!

Very importantly we re-visited and updated our school's Vision statement at the end of last year which now reads: *“**Let your light shine**’ Matthew 5:16 is central to all that we do as a Christian school community. We work together to nurture the well-being, learning and development of everyone, empowering all to shine as individuals through clearly understood values and behaviour, founded in the Christian faith.”*

‘Let Your Light Shine’ is the selected Bible quotation which sums up the school's Values within the statement. Every child in the school knows it and has also learned to say it in sign language. At last month's Infants' Family Assembly in St Nicholas' church Year 2 taught it to the 25 or so parents who were in the congregation. Under Phil Groves' leadership and guidance the children confidently 'signed' the words and the parents were most appreciative of having been taught it!

Parishioners do from time to time ask why the school has been closed due to snow, especially when the amount lying on the ground is quite small! So it is probably worth just explaining the main considerations.

Please believe me that we do not take such action lightly, and it is taken in conjunction with the Chair of Governors and the local authority; we are acutely conscious that the knock-on effect on parents can be considerable.

Quite often closure is due to anticipated severe conditions and we have to be guided by forecasters – and they can get it wrong, either way. There is a fine line between keeping the school open and finding at lunchtime that the snow has come early and parents and the school bus are unable to get in to collect the children!

A school cannot open if there is insufficient staff to cover for the children in their care and many travel quite long distances.

Also, if critical supplies such as hot meals cannot get to the school then that becomes a factor; linked to this is the ability of school buses to both access the site and collect at the end of the day.

Both school sites have challenges regarding parking when children are being delivered and dropped off; the Junior site here in Dinton has its particular problems and please be assured that we are in regular communication with parents about it. As well as this we are involving our PCSO Sue Jones who is being very active and supportive.

Kim Price, Headteacher



PARISH COUNCILLOR VACANCY

Want to know what a Parish Councillor does?

Want to make a difference?

If so, contact the Clerk to the Parish Council for further information.

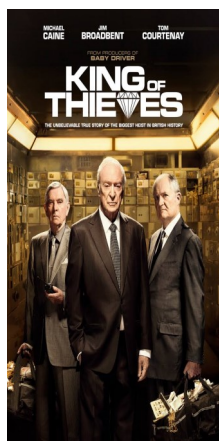
Details on back page.

PARISH INTERESTS

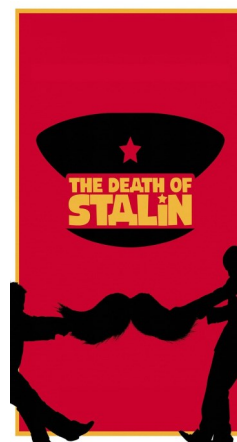
What's happening outside the Parish?



Local films showing at Haddenham Youth & Community Centre January - March Season



- Tuesday 8 Jan The Death of Stalin
- Tuesday 22 Jan King of Thieves (15)
- Tuesday 12 Feb The Children Act (12A)
- Tuesday 26 Feb Crazy Rich Asians (12A)
- Tuesday 12 Mar Bohemian Rhapsody (12A)
- Tuesday 26 Mar Widows (15)



Haddenham Screen shows start at 8.00pm, doors open 7.30pm, unless otherwise shown. Tickets in advance: £5.00—(£4.00 for members/children) from Haddenham Community Library or visit www.haddenhamscreen.org.uk



OPENING HOURS:

Tuesday 9.00am- 5.00pm, Thursday 9.00am– 5.00pm
Friday 9.00am - 5.00pm, Saturday 9.30am - 1.00pm



NEXTDOOR—What is it?

Nextdoor is an easy way to stay connected, wherever you are.

Nextdoor is the best way to stay informed about what's going on in your neighbourhood - whether it's finding a last-minute babysitter, planning a local event or sharing safety tips. There are so many ways our neighbours can help us, we just need an easier way to connect with them. Check out the NEXTDOOR app and information can be found on the internet - just GOOGLE it and see. You can sign-up to join and find out what's going on near you.



Dinton Village Hall:
Suitable for parties and all types of get-togethers.

For all enquiries for the Village Hall please contact the Bookings Secretary:

**Diana Trigg, Biggs Cave,
Biggs Lane, Dinton, HP17 8UH
Telephone: 01296 748361**



COMMUNITY PLAN

**The Future of our Villages:
Dinton, Ford, Upton, Westlington and Gibraltar
Community Led Plan**



Over 100 residents attend Community Plan events!

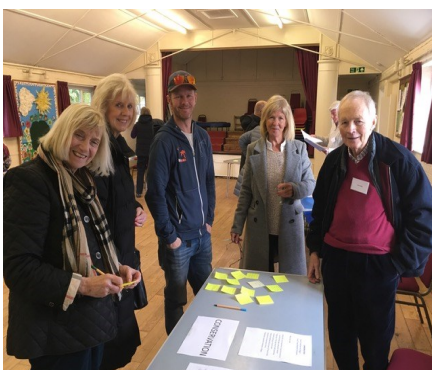
Two very successful events were held during February to launch a Community-led Plan for our villages – Dinton, Ford, Gibraltar, Upton and Westlington. The events were held in Dinton Village Hall on a Saturday afternoon and a Tuesday evening to ensure as many people could attend as possible, with the events being publicised via flyers, the Dinton.info web site, nextdoor.co.uk. and lots of talking to our neighbours!

The organising team were delighted by the turn out from local residents with over one hundred people attending across the two events. The positive and enthusiastic atmosphere encouraged everyone to give their thoughts and ideas about life in our villages.

Although there were some guideline subjects, e.g. Roads, Transport, Safety, Security, Village events, Environment, Conservation, Amenities, people were encouraged to contribute their thoughts about improving any aspect of village life. Consequently, there were some excellent ideas put forward with a sea of suggestions written on post-it notes!

Once the team has collated all the ideas and suggestions, the next step will be to write a draft document identifying priority actions that our community wants. We hope to produce a draft document over the summer which can be shared with residents by early autumn.

Whilst it is important that we are realistic about what can be delivered – most big changes will require funding – the success of the events was a great reminder of the fantastic area we live in and how, when people come together around a common purpose, a lot can be achieved. If you would like to get involved in any way, please contact a member of the team or send an email to dintonplan@gmail.com, comprised of local residents; Amanda Bassett, Nick Cottman, Anne Dunne, Mel Kidner, Dick O’Driscoll and John Owen. Additional support is provided by Helen Archer of Community Impact Bucks, a charity supporting local community groups and is endorsed by the Parish Council.



EastWestRail



East West Rail is creating a new direct connection between Oxford Cambridge, and beyond. Once complete it will be a world class rail line connecting Oxford, Bicester, Milton Keynes, Bedford, Cambridge, and communities in between. The section between Oxford and Bicester was completed in 2016 and enabling work has been completed on the section between Bicester and Bedford.

The East West Railway Company was set up by the Secretary of State for Transport in 2017, with the ambitious remit to accelerate delivery of rail infrastructure and passenger services between Oxford and Cambridge.

The line will deliver much needed connectivity to unlock the economic potential of this corridor - supporting new jobs and communities, as well as reducing journey times and travel costs for residents and commuters.

- East West Rail is being built progressively in sections:
- Oxford to Bedford (the Western Section)

Phase one (Oxford to Bicester) already complete

Phase two (Bicester to Bedford) will see major track and signalling upgrades extending services from Oxford to Bedford and Milton Keynes to Aylesbury. These works include the reinstatement of the Varsity line between Bletchley and Claydon Junction, a mothballed section of railway closed since the 1960s.

Central Section: Bedford to Cambridge. East West Railway Company is currently undertaking a public consultation on five route options for this section. Full details are available at <https://eastwestrail.co.uk/haveyoursay>



**YOU MUST USE THIS SERVICE TO
REPORT ALL FAULTS TO
BUCKINGHAMSHIRE COUNTY
COUNCIL**

Tel: 01296 382416

Email: <https://www.fixmystreet.buckscc.gov.uk/>

FixMyStreet Bucks is a site to allow people to make reports to Buckinghamshire County Council. FixMyStreet Bucks is primarily for reporting things which are **broken or damaged or dumped, and need fixing, or clearing**, such as: Flooding, Grit bins, Rubbish or flytipping, Potholes, Street signs and traffic lights and Unlit lampposts.

PLEASE REPORT ALL HIGHWAY & OTHER ISSUES BY USING THIS SITE

COUNCILLORS:



Martin Usherwood 01296 748129
Chairman martinusherwood@dinton.org

Jon Horn 01296 748297
Vice-Chairman jonhorn@dinton.org

Mel Kidner 01296 747880
melkidner@dinton.org

Honor Vane 01296 748177
honorvane@dinton.org

Anne Dunne 07740 486884
adunneupton@gmail.com

Dick O'Driscoll 01296 748283
odriscoll110@btinternet.com

CLERK:

Keith Gray JP,
CiLCA, FSLCC, MILM
Disraeli House
15 Disraeli Square
Fairford Leys
Aylesbury
Buckinghamshire HP19 7GS
Tel: 01296 - 422800
Mob: 07789 - 586594
Email: keith.gray6@btopenworld.com



Bell Ringing Tower Captain

Andrew Wild - 01296 748679

Church of England Minister

Margot Hodson 01844 291244

Vicar Associate

Dr Phil Groves 01844 291244

Church Wardens

Rosemary Jackson 01296 748655

Neil Chudley - 07788 923493

Baptisms, Weddings & Funerals

Parish Office - 01844 291244

Churchyard Working Party

Andrew & Helen Wild - 01296 748679

Cuddington & Dinton School

01844 291206

Headteacher: - head@cds.school

Office - office@cds.school

Dinton Village Hall Bookings

Diane Trigg - 01296 748361

Haddenham Community Library

0845-2303232

Parish Magazine (Dinton)

Mike Thompson - 01296 748561

Police Station (Waddesdon)

PC Dean Kingham/PCSO Sue Jones—101

Pre-School, Dinton Village Hall

Valerie Partington - 07917 044132

Hotline against Fly Tipping

0845 330 1856

Akido

Anthony Pinchbeck - 01296 747853

Cubs & Beavers

Emily Gray - 07746 973805

Dinton Cricket Club

Peter Ludlow 01296 747254

chairman@dintoncc.co.uk

Pot Hole Reporting 01296 382416

<https://www.fixmystreet.buckscc.gov.uk/>

Planning Applications: [https://](https://www.aylesburyvaldec.gov.uk/searchplanning-licensing-applications)

www.aylesburyvaldec.gov.uk/searchplanning-licensing-applications

Footpath Problems [http://](http://www.transportforbucks.net/report-it-prow.aspx)

www.transportforbucks.net/report-it-prow.aspx

GOOD NEIGHBOURS SCHEME

Transport to doctors, hospital, opticians, collection of prescriptions, help with getting out of the house in bad weather and shopping in the case of illness.



GIBRALTAR

Barbara Green 748529

FORD:

David Hobden 748476

UPTON:

Jo & David Troup 747735

Chloe Lambert 748221

DINTON:

Lorraine Gooch 747655 Sylvia Eaton 748537

Carol Lynch 748392 Keith Mitchell 747018

Honor Vane 748177 Helen Wild 748679

Valma Thompson 748561 Stella Young 748771

Alan Weston 748287 Roland & Margaret 748360

Childerhouse

Co-ordinators: Jo Troup and Helen Wild

HADDENHAM COMMUNITY VEHICLE

(HCV) The Community Vehicle (HCV) is for all who are disabled or have walking or mobility problems. The service is FREE although donations are welcome. The vehicle is for anyone in the parish who has a transport need.

To find out more about the HCV, or to make a booking, please contact the coordinator, Sue Brigham, on 07495 366779 or email haddenhamcv@gmail.com. Similarly, contact Sue if you are interested in joining our team of trained volunteer drivers.